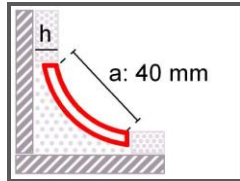


Novoescocia[®] 2 Aluminium

h: 7 mm

Length: 250 cm

Material: Aluminium



NOVOESCOCIA[®] 2

Profile as a half cane to facilitate the cleaning of tiled skirting and angles. Special to fix in the tiled **during the play**.

The Novoescocia[®] profiles are specially designed to be placed in skirting-baseboard and tiled corners. They are usually used in sanitary, medical, feeding or industrial areas where exhaustive hygiene and cleanliness conditions are required.

PROPERTIES OF ALUMINIUM

- Aluminium is, after iron, the metal more used in the world, and, very regularly, used in modern construction too, as it has many technical advantages.
- Aluminium used in this profile of Emac[®] is a high-performance aluminium, which is ideally suited to the tasks for which they are intended. This alloy corresponds to the 6063, according to the European Aluminium Association. (Numerical designation UNE 38-337-82, according to Spanish Standard UNE 38-3003441).
- Aluminium protects itself forming quickly a thin surface layer of aluminium oxide (Al_2O_3) when it to come into contact with the air. This layer is waterproof and stops the process of oxidation, which provides corrosion resistance and durability.
- It's a light, malleable and, in turn, very tough material. Its specific mass is 2,70 g/cm³
- Its behavior to fire is classified as a **M1**, combustible Material but not inflammable, which involves its combustion will stop without the contribution of heat coming from an exterior heart.
- Lacquering processes that is performed on Novoescocia[®] 2 have a Qualicoat quality label. The protection and colour provided by this process is stable, consistent and durable, providing an aesthetic appearance and highest quality finished.



FINISHED

It's presented in natural aluminium and lacquered by processes guaranteed by Qualicoat label of quality.

LACQUERED Aluminium

The lacquer is a protection system of aluminium which consists in the coat of an organic covering or paint on the surface of the aluminium.



Lacquered aluminium profiles of Emac®, have been achieved through an exclusive and unique technology of high-quality decorative lacquer and certified with quality label QUALICOAT that establishes the minimum requirements that the production facilities, lacquer-ware materials and final products must comply.

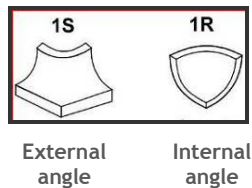
Lacquered aluminium profiles undergo periodical testing, such as:

- Appearance and gloss.
- Coating thickness
- Lacquered adhesion
- Indentation
- Impact test
- Resistance to humid atmospheres containing sulphur dioxide.
- Acetic acid salt spray resistance.
- Polymerisation test

Lacquered aluminium profiles of Emac® offer an uniform coat of paint of about **100 microns**, responding to the requirements of construction and current standards.

COMPLEMENTARY PIECES

Novoescocia® 2 has available complementary pieces to allow you achieve a perfect finished.



These pieces are made of Zamak, an alloy, non-ferrous, zinc with aluminium, magnesium and copper (according to UNE-EN 1774), that permits obtain injected pieces to the perfect finish of the corners. It is a persistent material, with high hardness, high mechanical resistance and an excellent plastic deformability. Its properties are regulated according to UNE-EN 12844.

The colored Zamak through any of our processes, chrome through electrolithic bath according to the rules UNE-EN 12.540 or painted, it resists outside, without any degeneration or bleach.

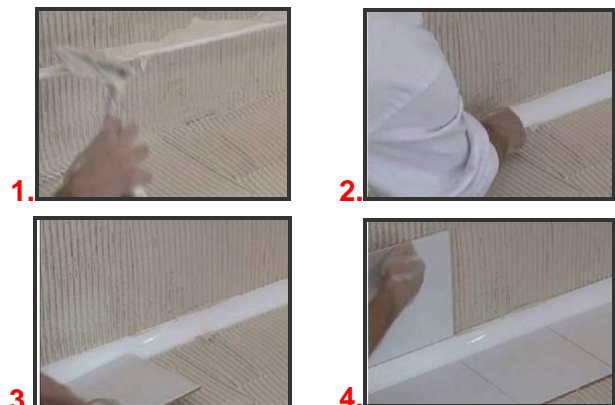
These complements are available in the same colour as the Novoescocia®, guarantying its durability and colour stability. We do not recommend its purchase in natural finished, because this material with heat and humidity gets dark and loses its homogeneous appearance. If you decide obtain this piece in natural finished you should apply plastic paint or other similar product to protect it .

PLACEMENT

The Novoescocia® 2 is designed to be place before the tiling. Fixation will be carried out with the same fixing material used for tiling.

- I. For its fixation, use abundant fixing material on the profiles' back surface.
- II. Then lean the profile lengthwise against the angle made by the floor and the wall.
- III. After this, place the wall and floor tiles placing them against the profile, making sure that: the tiled wall, the Novoescocia profile and the floor are evened at the same level.
- IV. Finally, clean carefully the spare material.

Example of placement of a Novoescocia® model during the play



COMPLEMENTARY PIECES PLACEMENT

To place the accessory pieces, first align these pieces perfectly with the Novoescocia profile's end. Place abundant fixing material on the back of the profile to ensure not only the correct support of the pieces but also a better fixation.

CLEANING AND MAINTENANCE

After having installed an Aluminium profile, we recommend the immediate cleaning of the fixing material to avoid loosed of aspect. Aluminum is sensitive to alkaline materials or products, so it is important to remove the traces of wet cement, mortar or grout to prevent the emergence of possible oxidation marks.

Natural Aluminium

- The natural oxide layer formed on the aluminium and used to protect it from corrosion can be dissolved with citric acid, so they should avoid using cleaners that contain this acid, since it could remove the protective layer of aluminium, decreasing resistance to corrosion.
- Aluminium has amphoteric characteristics. This means that dissolves in strong acids (eg. Sulfumán or hydrochloric acid (HCl) and perchloric acid (HClO₄)), and strong alkalis

The steel wool, abrasive cleaner and scouring product are not recommended and could soil, get scratched or eliminate the treatment of the surface of Aluminium. Nor is it advisable to use soda solutions, and strong acidic or alkalis.

(such as caustic soda (NaOH), potash (KOH) or ammonia (NH₃)), so their use is not recommended.

- Aluminium also reacts with Cu⁺² and Cl⁻ ions (since their passivation disappears, and becomes reactive). They may also be affected by contact with solvents containing halogen-alkenes (hydrofluoroethers (HFEs), chlorinated solvents (trichloroethylene), and so on.), but generally resistant to corrosion due to rust that forms the protective layer.

Lacquered Aluminium

Interior Applications

Concerning the lacquered aluminium indoor, it's sufficient to rub with a rag. If it has dirt on time, the cleaning must be with soapy water, clarifying then with clean water and drying with a soft cloth. The cleaning must be done using dissolution at 5% in clean water, a detergent or a neutral soap using a sponge, a leather rag or a wet rag, to avoid the presence of elements like sand, dust, etc...Check up that the lacquered surface is totally cold (Max 20°) and do not expose to sun.

Exterior Applications

Clean regularly lacquered aluminium placed in exterior. The frequency of cleaning will depend of the area on the area on which is located the construction, even if it must be done 1 time a year at least.

TECHNICAL INFORMATION

You can download more information about the technical characteristics of the material that the Novoescocia[®] 2 is made of in www.emac.es



In www.emac.es you can download for free the Technical Manual of Profiles, where you will find information about all our

profiles, its features, advices for cleaning and maintenance of the materials on which they are made, as well as, special applications and regulations and by-laws that affect our products. If you have some query or question, please contact with the technical office:

otecnica@emac.es